

## All Saints Road Wimbledon, SW19 1BU

**£650,000 Freehold**



**Offered with no onward chain and full of character, this two bedroom Victorian cottage is presented in fantastic condition throughout and benefits from a large private south facing garden of over 50ft in length. With charming period features including an inviting log burner in the lounge and boasting a separate dining room, this house would be an ideal first time purchase. Situated within close proximity of Wimbledon town centre, excellent commuter routes, sought after schools and wonderful green open spaces.**

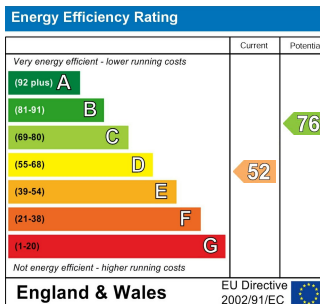
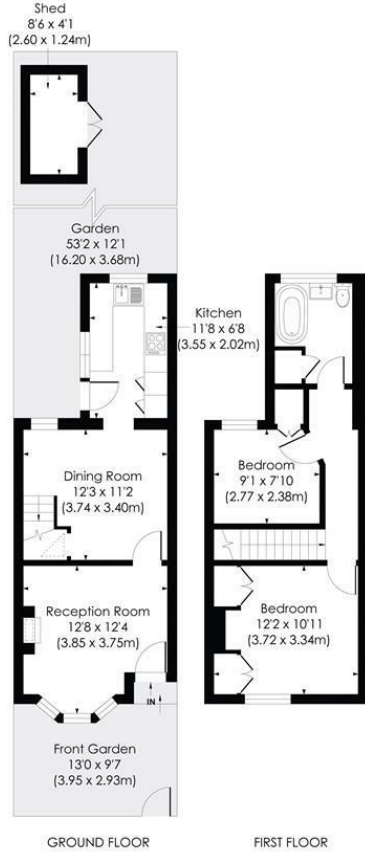
**Early viewings are highly recommended.**

**ALL SAINTS ROAD, SW19**

Approx. Gross Internal Floor Area

**754 Sq. ft/69.29 Sq. m**

(Including reduced height)



This floor plan has been prepared for the purpose of illustration only in accordance with the latest RICS code of measuring practice and is not to scale. All measurements and areas are approximate and whilst every effort has been made to ensure the accuracy of the plan contained here, no responsibility is taken for any error, omission or misstatement.

- No Onward Chain
- Victorian Cottage
- Two Double Bedrooms
- South Facing Rear Garden (Over 50ft in Length)
- Lounge and Separate Dining Room
- Excellent Commuter Routes Close By
- Freehold
- EPC Rating E
- Council Tax Band D

**For Free Mortgage Quote and Best Mortgage Rates, call an Ellisons Mortgage Advisor on 020 8944 9494**



Although these particulars are believed to be correct, their accuracy is not guaranteed and they do not form part of any contract.

**Celebrating 30 years of successful Sales and Lettings in Merton**

